



## River Operations Update

**Wyangala Dam** was around 90.4% on Monday. While there was 50 to 80 mm in that Wyangala Catchment around 30 Nov to 1 Dec, the initial losses look relatively high as catchment would have been dry and soaked up a fair bit.

The Lachlan River and Crookwell River at Narrawa and Reids Flat only peaked in that 1500 to 2000 ML/day range and all appear to be on a recession or decreasing. Same goes for the Belubula River with not much inflows for that system.

The Lachlan River downstream of Jemalong is above 3,500 ML/day and especially with more rain forecast could stay in that 3500-1500 ML/day range until around 9 December and might see recession after than (again pending forecast rain).



**Lake Cargelligo** around 82.3% and is likely to be used to capture some of that rainfall tributary water surplus to operational requirement when it arrives (maximum inlet capacity around 1000 ML/day in general pending storage level).

**Lake Brewster** is around 50.3% and flow reduced on Monday at the outlet (Bensons Drop) to about 180-150 ML/day and 500 ML/day through conduit (from Lachlan River). About 600 ML/day going into Lake Brewster inlet early this week but that can change anytime (as can any of the storage inlet/outlet operations) and similar to Lake Cargelligo, inlet capacity around that 1000 ML/day in general pending storage level (can be higher if storage lower).

Lachlan River upstream of Willandra Weir was around 880 ML/day Monday and about 800 ML/day on Tuesday. So Willandra Weir is in the recession phase for the Hillston Dispersal Pulse which is just about to end and go back to operational requirement.

It is likely given the rain that will be a lot of cancellations of orders and/or no take the last day or so (and may continue with more rain). Losses between Hillston and Whealbah and Booligal also appear to be lower than initial forecasts.

The Lachlan River at Booligal is higher than the forecast target of 750 ML/day and is currently close to 890 ML/day. Looking at Whealbah, it is possible will go to 900-1000 ML/day this week. Given there was more rain in last day or so – could stay in that 900 to 1000 ML/day until end of next week (around 10-12 December).

Booligal should then start to fall back relatively quickly to the forecast baseflow of 150 ML/day by around 18 December (assuming Water Quality Allowance is activated for extra 100 ML/day on top of 50 ML/day operational requirements).

## Belubula & Lachlan Unregulated Water Sharing Plans

The draft Water Sharing Plans for the unregulated Belubula and Lachlan Rivers were released in November with “consultation” conducted late November/early December via webinar and face to face meetings with Canowindra and Cowra.

Submissions for both are due no later than midnight Friday 10 January 2025, and there are a number of ways you can make a submission. You can email your feedback to [wspconsultation@dpie.nsw.gov.au](mailto:wspconsultation@dpie.nsw.gov.au).

You can download a submission form, complete it, and send it to the address above. To see the submission form, visit the following links:

**Belubula** [Click Here](#)

**Lachlan** – [Click Here](#)

You can also complete an online survey at the following links:

**Belubula** - [Click Here](#)

**Lachlan** - [Click Here](#)

For more information including the draft plan and supporting documentation [Click Here](#) for the Belubula, and [Click Here](#) for the Lachlan.

## Proposed Lachlan WSP Prescribed Wetlands

The draft Water Sharing Plan for the Lachlan Unregulated River includes the “identification” of new wetlands. Feedback on the wetlands has been extended until 2<sup>nd</sup> February 2025.

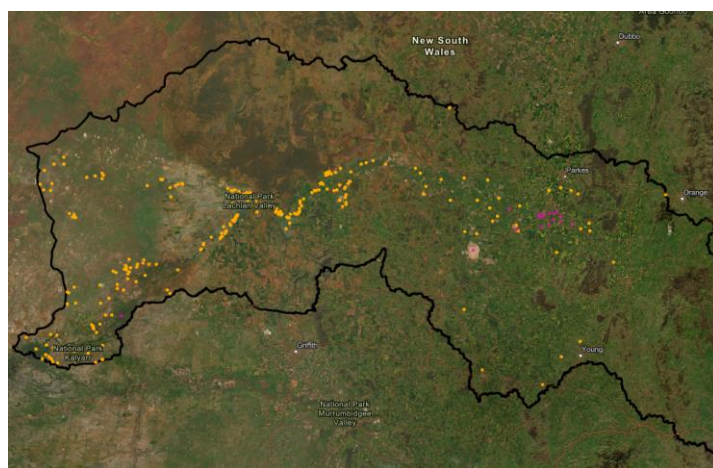
To assist the Department in removing those area’s that are currently designated as wetlands, but are not wetlands (ie, are dams, storages, other items etc) we have sent an email with an attached form for completion to members.

To view the map [Click Here](#) to see if your property is impacted (Yellow area are the new wetlands, pink is existing wetland from the previous Water Sharing Plan).

You can zoom in on individual wetlands to see the lot and DP numbers. Additionally, if you click on an individual wetland the “object ID” should appear in the middle column. The object ID isn’t as important

as the Lot/DP numbers, so don’t worry if you cant get the object ID. To download the feedback form [Click Here](#) , save to your computer, complete, save again, then send to [eo@lvw.com.au](mailto:eo@lvw.com.au)

For those that don’t have great internet or are not computer savvy, I will send out a separate email in the next few weeks detailing a visit schedule where I’ll come to Forbes, Condobolin, Lake Cargelligo, and Hillston where you can “drop in” and sit with me and I’ll go through the map with you on my laptop and fill out the form with you.



We will address the nature and potential impacts of these wetlands being gazetted in the future and propose more collaborative approaches, however the feedback form is our best option to highlight incorrect mapping, and provide the department with site specific data. We will provide the data from the forms to the department, so please advise when you return if you would like your contact details included or removed.

It’s important that as many people as possible put in a submission objecting to the wetlands being included in the water sharing plan. For ease, you can find a draft letter you can use/personalise by [Clicking Here](#). Once done you can send it via email to [wspconsultation@dpie.nsw.gov.au](mailto:wspconsultation@dpie.nsw.gov.au)

## IPART Issues Paper & WaterNSW Pricing Proposal

IPART has released its issues paper for the 2025-2030 Pricing Determination for regional and rural bulk water alongside WaterNSW's pricing proposal. To view the Issues Paper, [Click Here](#).

IPART has also released WaterNSW's Pricing Proposal for the period 1 Jul 25 – 30 June 30. To view the pricing proposal, [Click Here](#).

Submissions are currently due close of business Monday 9 Dec 24. For more information regarding how to make a submission, [Click Here](#)

## Metering Rule Amendments Consultation

Following the Metering Recommendations Report released in August, DCCEEW has placed on exhibition the amended metering rules. Changes proposed include:

- the introduction of a classification system for work approvals
- simplification of metering requirements for smaller and low-risk water users
- extending compliance deadlines for some water users
- measures to address the shortage of duly qualified persons (DQPs) for meter installation and improve training
- extensions to meter re-validation timelines
- practical changes for floodplain harvesting measurement

Importantly, the Department is removing 'at risk' water sources where all licence holders were required to comply with the metering policy in full. These water users will now be eligible for the same exemptions extended to small and intermittent users in other regions.

You can review the regulation facts sheet by [Clicking Here](#).

## NRAR Finds High Levels of Water Compliance

NRAR has released its [2023-24 progress report](#) which again proves irrigators and water users are overwhelmingly doing the right thing. Facts matter: if we divide the total of 277 enforcement actions below into NSW's 40,000 water access licences, only 0.007% of licences warranted an NRAR enforcement action. By comparison, 12% of vehicles registered in NSW get pinged each year for a traffic infringement.

## 2023-24 NRAR Compliance Actions

Total Enforcement Actions: 368 actions, including:

- 1 prosecution initiated.
- 3 prosecutions concluded.
- 70 penalty notices issued.
- 127 directions to stop work or take remedial action.
- 76 formal warnings or official cautions.

## 2023-24 NRAR Staffing

Employees: 201 staff members, with:

- 63% based regionally.
- An 8% increase in female employment.
- 21 locations across NSW

These consistently low infringement numbers prove what we've always known: irrigators in NSW use water fairly and efficiently. The latest NRAR report is yet another clear example of this.

## LVW Membership Renewals

You should have received your membership renewals in October, along with a link to update your membership details online. As part of our digital overhaul, we're updating our database, and this form is our best opportunity to make sure we have the right info. Even if you're not a member, please take the time to complete the information. It's going to be a lengthy process for us, but one that will reap benefits going forward. Why do we ask you complete the form if you're not a member? We try and track Water Access Licence (WAL) sales to ratify catchment entitlements and use the data for when we lobby. Thank you to those who have paid their membership subscriptions already. You can access the form to update your details by [Clicking Here](#).

## Water Resources and Links

[Water Allocations Dashboard](#)

[Lachlan Allocations](#)

[Lachlan Water Trades](#)

[WaterInsights – Lachlan Storages](#)

[Lachlan Region Water Sharing Plans](#)

[Lachlan River Catchment Map](#)

What else would be useful to include in this section?

Please send me your suggestions!

Glenn Daley,  
Executive Officer, Lachlan Valley Water  
E: [eo@lvw.com.au](mailto:eo@lvw.com.au) M: 0411 447 025